

名古屋大学マイクロ・ナノ機械理工学専攻 新井研究室 <http://www.biorobotics.mech.nagoya-u.ac.jp/>

所属教員

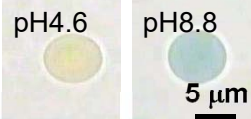
新井 史人(教授) 丸山 央峰(准教授) 益田 泰輔(特任准教授) 佐久間 臣耶(助教)
小俣 誠二(特任助教) 室崎 裕一(特任助教)

キーワード

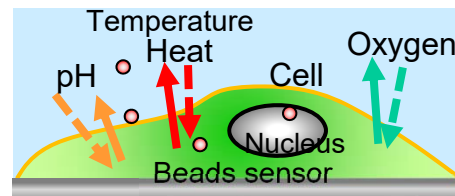
バイオロボティクス, マイクロ・ナノメカトロニクス, マイクロ流体システム

研究概要: 生物が有する優れた機能を調べ, 生物に学び, 新たな機能を有する機械システムを創出する.

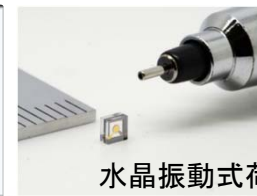
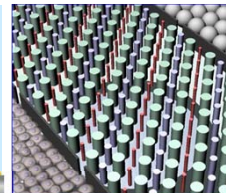
Measurement



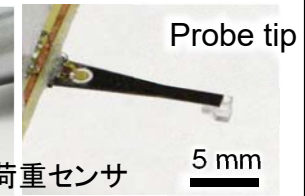
Gel bead sensor



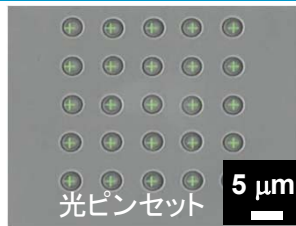
Environment Sensing by Light



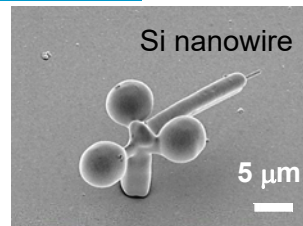
Wide range QCR load sensor



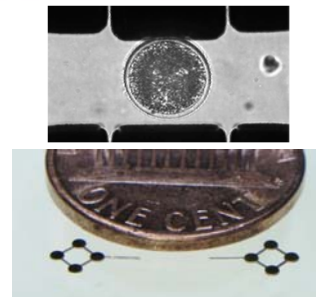
Manipulation & Control



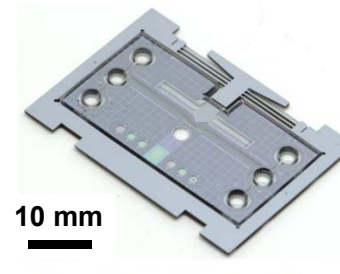
Multi-beam



Nano robot



Micro-tool

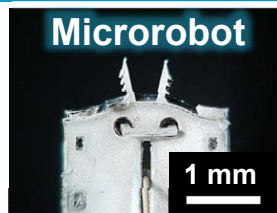


On-chip Robotics



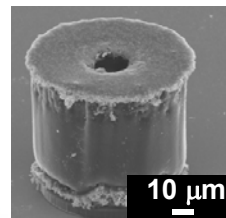
Open Flow Cytometer

Bionic Systems



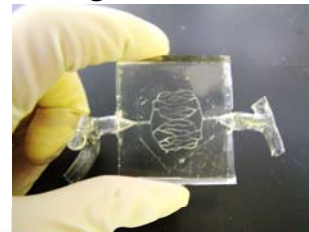
Bionic design

Self-Propulsion in Glucose Solution



Micro-nano robot

Living Humanoid



Blood vessel model

Patient simulators



Bionic-Eye™



Bionic humanoid